



PT. HANAZONO ENGINEERING INDONESIA

COMPANY
PT. SARANA METAL INDAH

ADDRESS/TEL/PRESIDENT
Jl. Penggilingan Timur VII/27-DD-18, Surabaya 60292
Tel. : 031-8473899
Hp. : 0878-6236-0913
ATTN. : Ibu Felicia Novriella

RECEIPT INSPECTION CHECKLIST REPORT

(LAPORAN DAFTAR INSPEKSI (PENERIMAAN))

1 OF 3

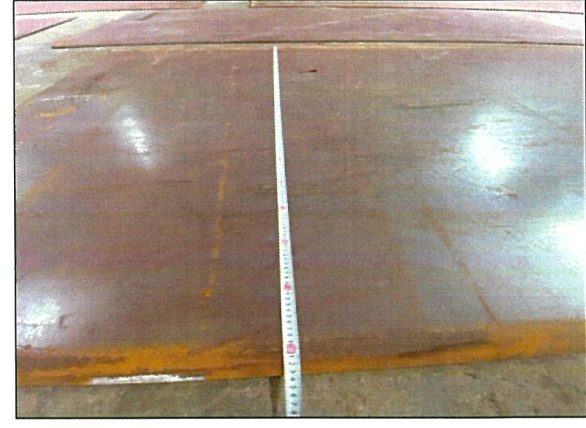
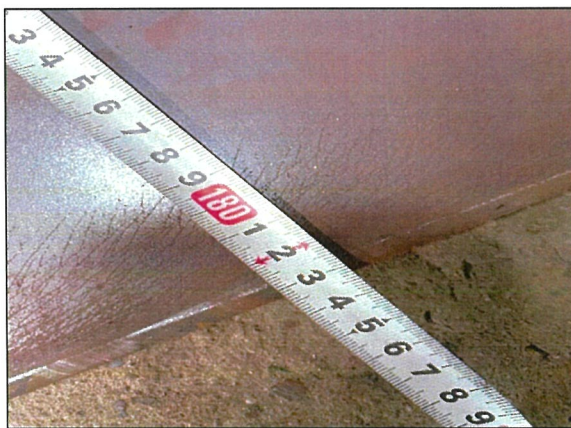
FILE NO.	PO. NO/INVOICE	MPR. NO	Received date:	Appr. No /Order
QA/HE/IR/CR/E2502-03	PO-HE/2502-SMI-PL-007	-	22-Oct-25	PO-HE/2502-SMI-PL-007
L/F	MATERIAL GROUP	RGR No.		
L	PLATE			
QA/HE/IR/CR/E2502-03				
Terms of Div/Terms of payment				
MO NO / P/T NAME				

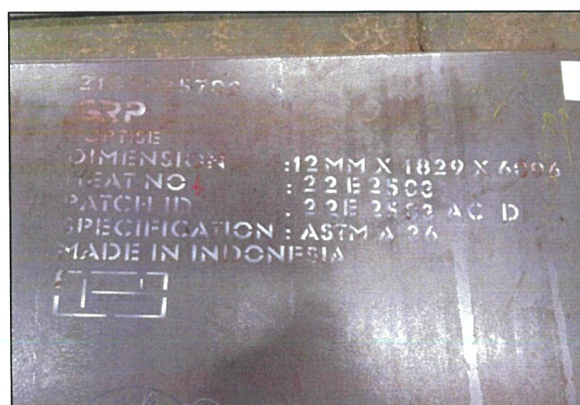
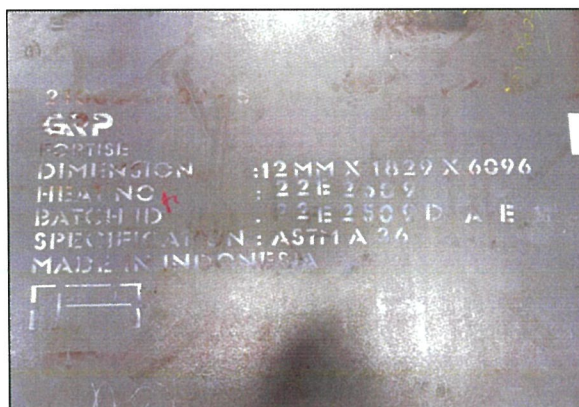
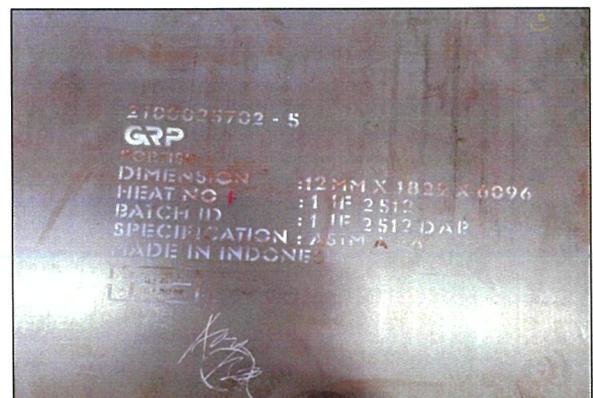
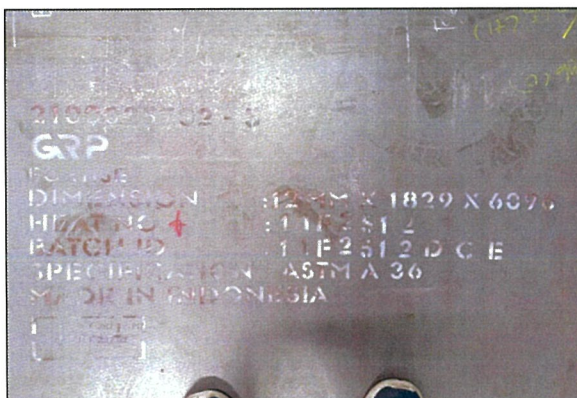
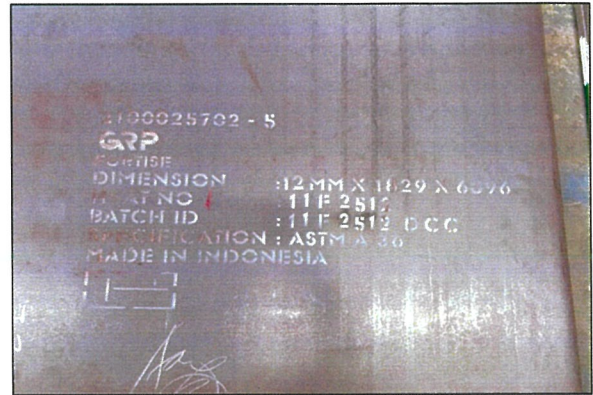
POBOYA 2000 EXPANSION PROJECT

ITEM NO.	DESCRIPTION/MATERIAL/SPECIFICATION	DWG NO	PART NO	REV.	UNIT	RECEIPT QTY		ORIGINAL MARKING	HEAT / LOT NO	INS.METHOD	BAD CONTENT		SIGN. DATE		REMARK
											CAUSE OF BAD	PTH		CUST	
1	Material Plate A36 12mm x 1829mm x 6096mm	-	-	-	ea	36		2100025702-5 GRP FORTISE DIMENSION : 12mm x 1829 x 6096 HEAT NO : 22E2509 BATCH ID : 22E2509 DCE SPECIFICATION : ASTM A36 MADE IN INDONESIA	22E2509, 22E2503, 11F2512	0,1,2,3,4					
						36		GRP-QA-MTC/4610B/IX/2025 GRP-QA-MTC/4607B/IX/2025		A					

REMARK :

PREPARED BY : BENRIDHO QC INSPECTOR	DATE OCT 24, 2025	0 : DOCUMENT 1 : DIMENSION 2 : MODEL (SPEC) 3 : VISUAL 4 : QUALITY 5 : CHEMICAL Insp. Item & Bad Content	6 : MECHANICAL 7 : STRUCTURE 8 : OTHERS PT : Penetrant Test ET : Eddy Current Test LT : Leak Test	Cause of Bad Code DS : DESIGN & SPEC MP : MATERIAL ME : WORKER FA : FACTORY INS : MEASURE EQUIPMENT	INS. RESULT A : ACCEPT S : USE-AS-IS H : HOLD R : REJECT
APPROVED BY : AGUSNANDI QC MANAGER	DATE OCT 27, 2025	RT : Radiographic Test MT : Magnetic Test			
ACCEPTED BY :					
COMO ENGINEERS	DATE				
ACCEPTED BY :					
PT. Citra Palu Minerals	DATE				







PT GUNUNG RAJA PAKSI Tbk
Plate & Steckel Mill

MILL TEST CERTIFICATE

SHAPING TOMORROW

Acc to EN 10204 : 2004 - 3.1

Purchaser

Head Office & Factory

Jl. Perjuangan No. 15, Kp. Tangsi RT. 006/007 Sukadaneu,
Cikarang Barat, Bekasi 17530, West Java, INDONESIA

Material : Hot Rolled Steel Plates
Specification : ASTM A 36 - 2019
Dimensional Tolerance : ASTM A6 / A6M-24b
Supply Condition : As Rolled
Decarburization Practice : Killed

Certificate Number : GRP-QA-MTC/4607B/IX/2025
Certificate Date : September 29, 2025
Contract No. : 1300009828
Sales Order No. : 2100025702
Customer Reference : GRP/SC-0311/MI/2025
Delivery Order No. : 5100128502

BATCH ID	HEAT NO	DIMENSIONS			WEIGHT (MT)	QTY (PCS)	CHEMICAL LADLE ANALYSIS (%)													TENSILE TEST (TR Dir)		
		T (mm)	W (mm)	L (mm)			C	Si	Mn	P	S	Nb	Cu	Cr	Ni	Mo	V	Al	Ti	N	B	CE
22E2503FCE	22E2503	12.00	1829	6096	1.050	1	0.13	0.114	0.56	0.018	0.0048	0.002	0.10	0.20	0.16	0.032	0.004	0.031	0.001	0.0046	0.0002	0.29
22E2508DAA	22E2509	12.00	1829	6096	1.050	1	0.12	0.133	0.56	0.015	0.0090	0.002	0.13	0.11	0.11	0.024	0.003	0.032	0.001	0.0036	0.0002	0.27
22E2508DAB	22E2509	12.00	1829	6096	1.050	1	0.12	0.133	0.56	0.015	0.0090	0.002	0.13	0.11	0.11	0.024	0.003	0.032	0.001	0.0036	0.0002	0.27
22E2508DAC	22E2509	12.00	1829	6096	1.050	1	0.12	0.133	0.56	0.015	0.0090	0.002	0.13	0.11	0.11	0.024	0.003	0.032	0.001	0.0036	0.0002	0.27
22E2508DDB	22E2509	12.00	1829	6096	1.050	1	0.12	0.133	0.56	0.015	0.0090	0.002	0.13	0.11	0.11	0.024	0.003	0.032	0.001	0.0036	0.0002	0.27
22E2508DBC	22E2509	12.00	1829	6096	1.050	1	0.12	0.133	0.56	0.015	0.0090	0.002	0.13	0.11	0.11	0.024	0.003	0.032	0.001	0.0036	0.0002	0.27
22E2509DCA	22E2509	12.00	1829	6096	1.050	1	0.12	0.133	0.56	0.015	0.0090	0.002	0.13	0.11	0.11	0.024	0.003	0.032	0.001	0.0036	0.0002	0.27
22E2509DCB	22E2509	12.00	1829	6096	1.050	1	0.12	0.133	0.56	0.015	0.0090	0.002	0.13	0.11	0.11	0.024	0.003	0.032	0.001	0.0036	0.0002	0.27
22E2509DCC	22E2509	12.00	1829	6096	1.050	1	0.12	0.133	0.56	0.015	0.0090	0.002	0.13	0.11	0.11	0.024	0.003	0.032	0.001	0.0036	0.0002	0.27
Total					28.350	27																
Grand Total					51.458	58																

Remarks :



FORTISE



We hereby certify that the material described herein
has been made & satisfactorily tested in accordance
with above specification.

TRUE COPY

Prepared by
Eka YD





PT GUNUNG RAJA PAKSI Tbk

Plate & Steckel Mill

MILL TEST CERTIFICATE

SHAPING TOMORROW

Purchaser

Head Office & Factory

Jl. Perjuangan No. 15, Kp. Tangsi RT. 006/007 Sukadana,
Cikarang Barat, Bekasi 17530, West Java, INDONESIA

Acc to EN 10204 : 2004 - 3.1

Material : Hot Rolled Steel Plates
Specification : ASTM A 36 - 2019
Dimensional Tolerance : ASTM A8 / A8M-24b
Supply Condition : As Rolled
Deoxidation Practice : Killed

Certificate Number : GRP-QA-MTC/4610B/IX/2025
Contract No. : 130000828
Sales Order No. : 2100025702
Customer Reference : GRP/SC-0311/VI/2025
Delivery Order No. : 5100129505

BATCH ID	HEAT NO	DIMENSIONS			WEIGHT (MT)	QTY (PCS)	CHEMICAL LADLE ANALYSIS (%)													TENSILE TEST (TR Dir.)				5100129505 Delivery Order No.	
		T (mm)	W (mm)	L (mm)			C	Si	Mn	P	S	Nb	Cu	Cr	Ni	Mo	V	Al	Ti	N	B	CE	Y.S. N/mm²		T.S. N/mm²
Item No : 5 11F2512DAD 11F2512DAE 11F2512DBD 11F2512DBE 11F2512DCD 11F2512DCE 12F2502EAD 12F2502EAE 22E2503ACD 22E2503ACE 22E2509DAD 22E2509DAE 22E2509DBD 22E2509DBE 22E2509DCD 22E2509DCE	11F2512	12.00	1829	6096	1.050	1	0.14	0.148	0.59	0.015	0.0020	0.003	0.17	0.17	0.14	0.031	0.002	0.033	0.001	0.0093	0.0003	0.30	313	458	26
	11F2512	12.00	1829	6096	1.050	1	0.14	0.148	0.59	0.015	0.0020	0.003	0.17	0.17	0.14	0.031	0.002	0.033	0.001	0.0093	0.0003	0.30	313	458	26
	11F2512	12.00	1829	6096	1.050	1	0.14	0.148	0.59	0.015	0.0020	0.003	0.17	0.17	0.14	0.031	0.002	0.033	0.001	0.0093	0.0003	0.30	313	458	26
	11F2512	12.00	1829	6096	1.050	1	0.14	0.148	0.59	0.015	0.0020	0.003	0.17	0.17	0.14	0.031	0.002	0.033	0.001	0.0093	0.0003	0.30	313	458	26
	11F2512	12.00	1829	6096	1.050	1	0.14	0.148	0.59	0.015	0.0020	0.003	0.17	0.17	0.14	0.031	0.002	0.033	0.001	0.0093	0.0003	0.30	313	458	26
	11F2512	12.00	1829	6096	1.050	1	0.14	0.148	0.59	0.015	0.0020	0.003	0.17	0.17	0.14	0.031	0.002	0.033	0.001	0.0093	0.0003	0.30	313	458	26
	12F2502EAD	12.00	1829	6096	1.050	1	0.18	0.140	0.47	0.023	0.0060	0.002	0.25	0.14	0.17	0.037	0.007	0.028	0.001	0.0071	0.0003	0.33	325	478	28
	12F2502EAE	12.00	1829	6096	1.050	1	0.18	0.140	0.47	0.023	0.0060	0.002	0.25	0.14	0.17	0.037	0.007	0.028	0.001	0.0071	0.0003	0.33	325	478	28
	22E2503ACD	12.00	1829	6096	1.050	1	0.13	0.114	0.56	0.018	0.0048	0.002	0.10	0.20	0.16	0.032	0.004	0.031	0.001	0.0046	0.0002	0.29	308	437	27
	22E2503ACE	12.00	1829	6096	1.050	1	0.13	0.114	0.56	0.018	0.0048	0.002	0.10	0.20	0.16	0.032	0.004	0.031	0.001	0.0046	0.0002	0.29	308	437	27
	22E2509DAD	12.00	1829	6096	1.050	1	0.12	0.133	0.59	0.015	0.0090	0.002	0.13	0.11	0.11	0.024	0.003	0.032	0.001	0.0035	0.0002	0.27	300	431	29
	22E2509DAE	12.00	1829	6096	1.050	1	0.12	0.133	0.59	0.015	0.0090	0.002	0.13	0.11	0.11	0.024	0.003	0.032	0.001	0.0035	0.0002	0.27	300	431	29
	22E2509DBD	12.00	1829	6096	1.050	1	0.12	0.133	0.59	0.015	0.0090	0.002	0.13	0.11	0.11	0.024	0.003	0.032	0.001	0.0035	0.0002	0.27	300	431	29
	22E2509DBE	12.00	1829	6096	1.050	1	0.12	0.133	0.59	0.015	0.0090	0.002	0.13	0.11	0.11	0.024	0.003	0.032	0.001	0.0035	0.0002	0.27	300	431	29
	22E2509DCD	12.00	1829	6096	1.050	1	0.12	0.133	0.59	0.015	0.0090	0.002	0.13	0.11	0.11	0.024	0.003	0.032	0.001	0.0035	0.0002	0.27	300	431	29
22E2509DCE	12.00	1829	6096	1.050	1	0.12	0.133	0.59	0.015	0.0090	0.002	0.13	0.11	0.11	0.024	0.003	0.032	0.001	0.0035	0.0002	0.27	300	431	29	

Remarks :



FORTISE

Reviewed By :
Signature
Date : 2024.9.20.15

We hereby certify that the material described herein
has been made & satisfactorily tested in accordance
with above specification.

TRUE COPY

Acknowledged By :
Signature
Susi Maya Sari
Quality Assurance

Prepared by :
Signature
Eka YO



PT GUNUNG RAJA PAKSI Tbk
Plate & Steckel Mill

SHAPING TOMORROW

MILL TEST CERTIFICATE

Acc to EN 10204 : 2004 - 3.1

Head Office & Factory
Jl. Perjuangan No. 15, Kp. Tangsi RT. 006/007 Sukadanau,
Cikarang Barat, Bekasi 17530, West Java, INDONESIA

Certificate Number : GRP-QA-MTC/4607B/IX/2025
Certificate Date : September 29, 2025
Contract No. : 1300009828
Sales Order No. : 2100025702
Customer Reference : GRP/SC-0311/VI/2025
Delivery Order No. : 5100129502

Material : Hot Rolled Steel Plates
Specification : ASTM A 36 - 2019
Dimensional Tolerance : ASTM A6 / A6M-24b
Supply Condition : As Rolled
Deoxidation Practice : Killed

BATCH ID	HEAT NO	T (mm)	DIMENSIONS			WEIGHT (MT)	QTY (PCS)	CHEMICAL LADLE ANALYSIS (%)													TENSILE TEST (TR Dir.)			
			W (mm)	L (mm)				C	Si	Mn	P	S	Nb	Cu	Cr	Ni	Mo	V	Al	Ti	N	B	CE	
Item No : 5																								
11F2512DA	11F2512	12.00	1829	6096		1.050	1	0.14	0.148	0.59	0.015	0.0020	0.003	0.17	0.17	0.14	0.031	0.002	0.033	0.001	0.0093	0.0003	0.30	313 - 458 26
11F2512DAB	11F2512	12.00	1829	6096		1.050	1	0.14	0.148	0.59	0.015	0.0020	0.003	0.17	0.17	0.14	0.031	0.002	0.033	0.001	0.0093	0.0003	0.30	313 - 458 26
11F2512DAC	11F2512	12.00	1829	6096		1.050	1	0.14	0.148	0.59	0.015	0.0020	0.003	0.17	0.17	0.14	0.031	0.002	0.033	0.001	0.0093	0.0003	0.30	313 - 458 26
11F2512DDB	11F2512	12.00	1829	6096		1.050	1	0.14	0.148	0.59	0.015	0.0020	0.003	0.17	0.17	0.14	0.031	0.002	0.033	0.001	0.0093	0.0003	0.30	313 - 458 26
11F2512DBC	11F2512	12.00	1829	6096		1.050	1	0.14	0.148	0.59	0.015	0.0020	0.003	0.17	0.17	0.14	0.031	0.002	0.033	0.001	0.0093	0.0003	0.30	313 - 458 26
11F2512DCA	11F2512	12.00	1829	6096		1.050	1	0.14	0.148	0.59	0.015	0.0020	0.003	0.17	0.17	0.14	0.031	0.002	0.033	0.001	0.0093	0.0003	0.30	313 - 458 26
11F2512DCB	11F2512	12.00	1829	6096		1.050	1	0.14	0.148	0.59	0.015	0.0020	0.003	0.17	0.17	0.14	0.031	0.002	0.033	0.001	0.0093	0.0003	0.30	313 - 458 26
11F2512DCC	11F2512	12.00	1829	6096		1.050	1	0.14	0.148	0.59	0.015	0.0020	0.003	0.17	0.17	0.14	0.031	0.002	0.033	0.001	0.0093	0.0003	0.30	313 - 458 26
12F2502EAA	12F2502	12.00	1829	6096		1.050	1	0.18	0.140	0.47	0.023	0.0060	0.002	0.25	0.14	0.17	0.037	0.007	0.026	0.001	0.0071	0.0003	0.33	325 - 478 28
12F2502EAB	12F2502	12.00	1829	6096		1.050	1	0.18	0.140	0.47	0.023	0.0060	0.002	0.25	0.14	0.17	0.037	0.007	0.026	0.001	0.0071	0.0003	0.33	325 - 478 28
12F2502EAC	12F2502	12.00	1829	6096		1.050	1	0.18	0.140	0.47	0.023	0.0060	0.002	0.25	0.14	0.17	0.037	0.007	0.026	0.001	0.0071	0.0003	0.33	325 - 478 28
22E2503ACC	22E2503	12.00	1829	6096		1.050	1	0.13	0.114	0.58	0.018	0.0048	0.002	0.10	0.20	0.16	0.032	0.004	0.031	0.001	0.0046	0.0002	0.29	306 437 27
22E2503FCA	22E2503	12.00	1829	6096		1.050	1	0.13	0.114	0.58	0.018	0.0048	0.002	0.10	0.20	0.16	0.032	0.004	0.031	0.001	0.0046	0.0002	0.29	306 437 27
22E2503FCB	22E2503	12.00	1829	6096		1.050	1	0.13	0.114	0.58	0.018	0.0048	0.002	0.10	0.20	0.16	0.032	0.004	0.031	0.001	0.0046	0.0002	0.29	306 437 27
22E2503FCC	22E2503	12.00	1829	6096		1.050	1	0.13	0.114	0.58	0.018	0.0048	0.002	0.10	0.20	0.16	0.032	0.004	0.031	0.001	0.0046	0.0002	0.29	306 437 27
22E2503FCD	22E2503	12.00	1829	6096		1.050	1	0.13	0.114	0.58	0.018	0.0048	0.002	0.10	0.20	0.16	0.032	0.004	0.031	0.001	0.0046	0.0002	0.29	306 437 27

Remarks :



FORTISE



Reviewed By :
Signature
Date: 27, 2025

We hereby certify that the material described herein
has been made & satisfactorily tested in accordance
with above specification.

TRUE COPY

Prepared by
Signature
Elex-D

Acknowledged By
Signature
Susi Maya Sari
Quality Assurance